

Wheatstone Project

Execution Overview



Chris Miller
Project Director Wheatstone Project

27 September 2012

Upstream Scope



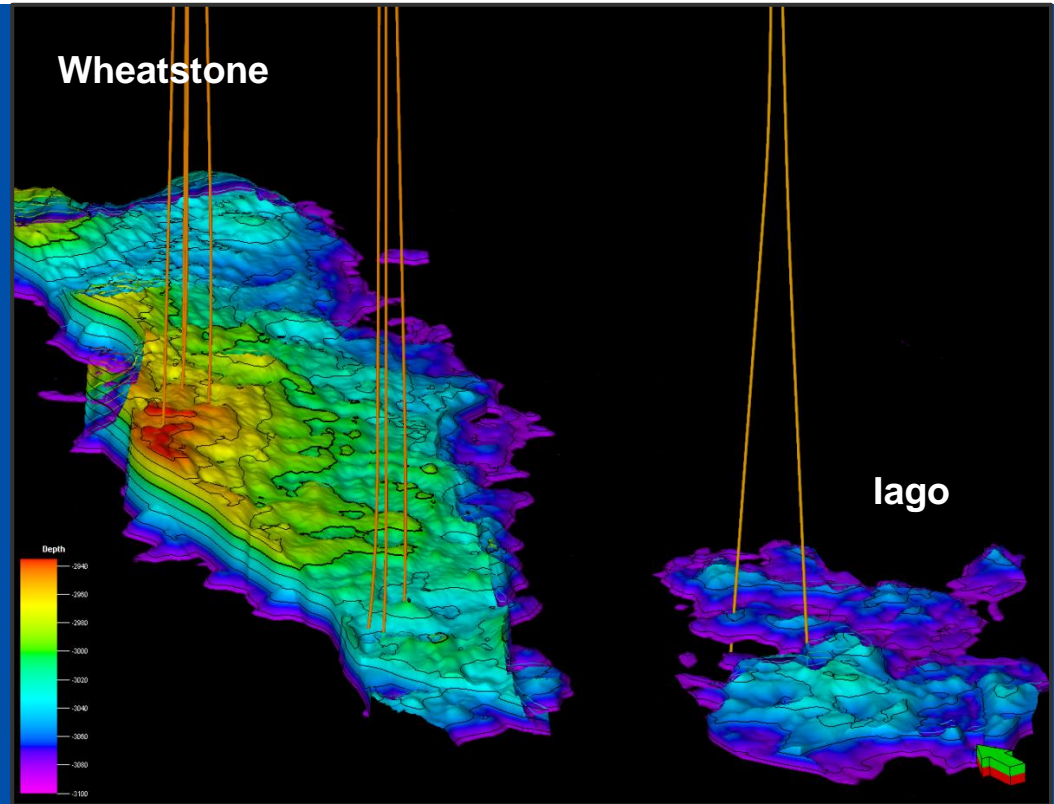
- 9 Tcf resource* to underpin foundation
- Wheatstone and Iago reservoirs
- 4,000 tons subsea equipment
- 180 miles of pipelines, 420,000 tons of rock stabilization
- 70,500 ton gas processing platform
- ¾ mile long x 8 ft diameter shore crossing tunnel



Drilling and Completion Scope



- 9 high-rate, big-bore development wells
- Drilling expected to commence in 2013
- 3 subsea well clusters
- 330 ft – 790 ft water depth
- 10,460 ft well depth
- 1.6 bcf/d production
- 250 mmscf/d well deliverability
- 2-3% CO₂



Platform Scope



▪ **Steel Gravity Base**

- 230 ft water depth
- 360 ft Long x 262 ft Wide x 312 ft High
- 33,500 tons structure
- 80,000 tons iron ore ballast

▪ **Topsides**

- 492 ft Long x 279 ft Wide x 148 ft High
- 37,000 tons structure (single piece)
- 2.0 bcf/d processing and compression (Wheatstone, Iago, Julimar, and Brunello)
- 104 bed accommodations



Proven Upstream Contractors



Strategic Drivers

- Strong track record with Chevron
- Minimal / clearly defined interfaces
- Risk management
- Synergies

Wells and Subsea

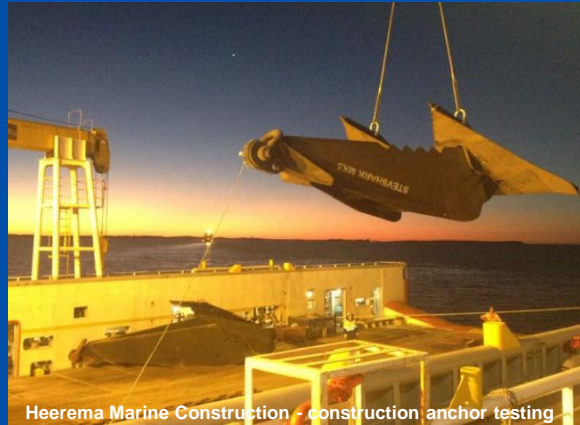
- Drilling
- Subsea equipment manufacture and installation
- Infield flowlines and gas pipeline

Platform

- Engineer, Procure, Construct, and Install (EPCI)
- Offshore Hook-up and Commissioning (HUC)



The Atwood Osprey semi-submersible drill rig



Heerema Marine Construction - construction anchor testing



Daewoo Shipbuilding and Marine Engineering – Wheatstone deck node fabrication

Upstream Progress



69%

Engineering
complete

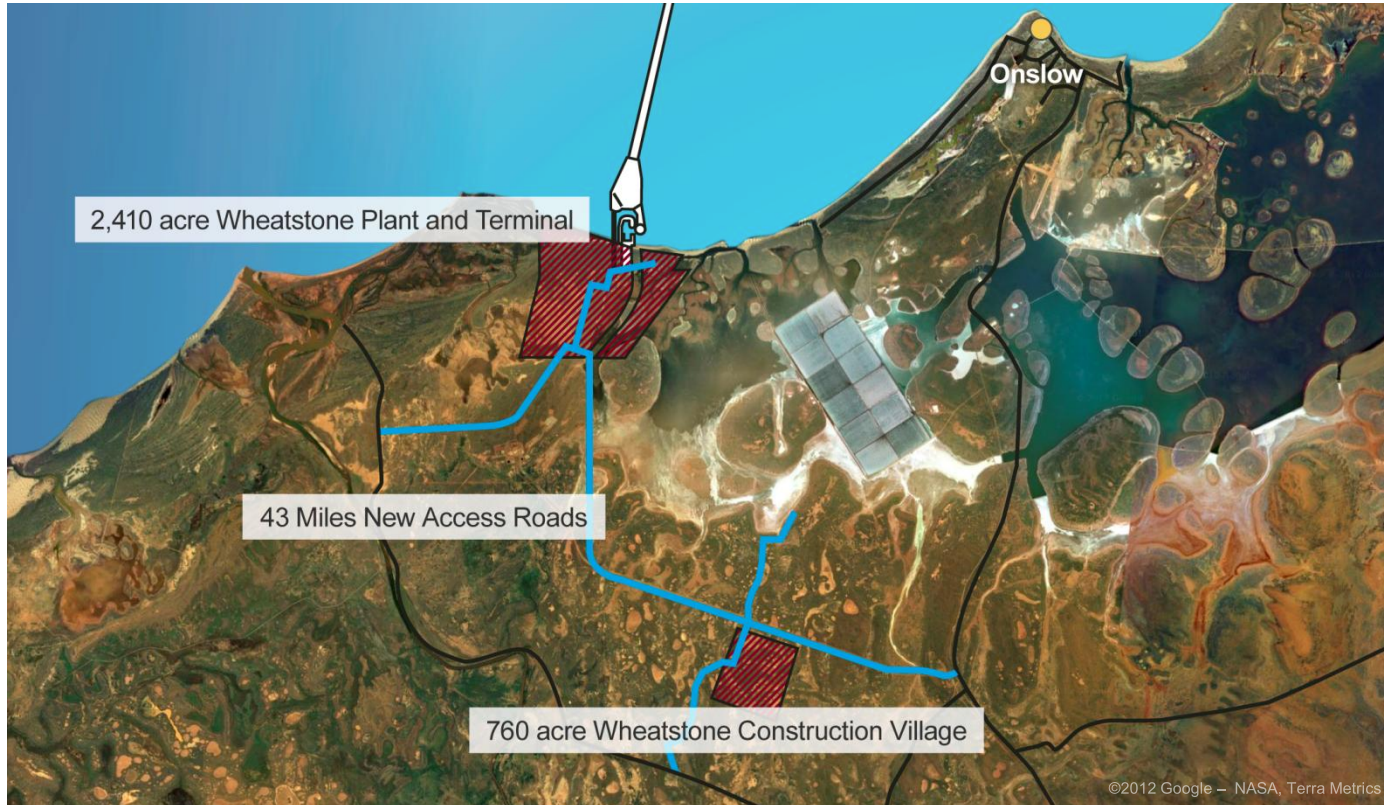
\$5B

USD
Awarded

- **Manufacturing and Fabrication**
 - 130,600 tons pipe manufactured (64 %)
 - 11,000 tons plate manufactured (23 %)
 - Equipment deliveries on schedule



Ashburton North Infrastructure Scope



- Roads
- Project Access Roads
- ▨ Project Boundaries



Downstream Scope



- 2 x 4.45 MTPA LNG trains
- 190 mmscf/d domestic gas plant
- 2 x 150,000 m³ LNG storage*
- 2 x 1 million barrel condensate storage
- 4,300 ft single-berth loading jetty (accommodate 215 m³ LNG tankers)
- 4 x 43 MW power generators
- 3 berth material offloading dock
- 9 mile shipping channel and turning basin
- 44 miles of domestic gas pipeline
- 5,000 bed construction camp

*1.3 million barrels LNG/tank



Proven Downstream Contractors

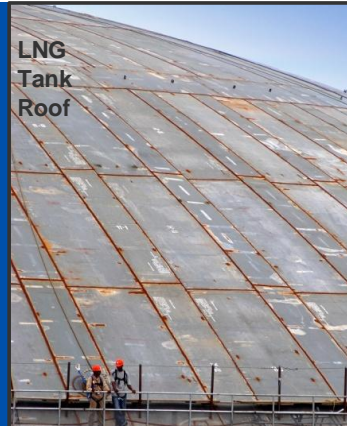


Strategic Drivers

- Strong track record with Chevron
- Proven performance in Australia
- Organizational capability
- Risk management
- Modularization

LNG Plant

- Engineer, Procure, Construct and Manage
- Prime Contractor - Bechtel
- LNG “template design”
- Demonstrated execution experience
- International and Asia Pacific regional sub-contractors with LNG experience



Downstream Progress



- **Engineering & Procurement**

- 34% engineering
- 25% procurement

- **Commitments**

- USD\$10 billion awards

- **Year 1 Construction –
Roads / Beds / Water**

- Access roads operational
- Water supply
- 775 person on-site workforce



2012 Achievements



- ✓ Commenced Construction Village site preparation
- ✓ Completed award of platform major equipment orders
- ✓ Completed award of all upstream major contracts and first 50% of downstream major contracts
- ✓ Commenced platform fabrication
- ✓ Achieved 600 bed camp capacity



Leveraging Chevron's Global Experiences



Lessons Learned

- 140+ execution improvements
- Cross-Project Engagements
 - Jack St. Malo
 - Big Foot
 - Gorgon
 - Angola LNG
 - North West Shelf

Synergies

- \$500mm capital cost savings to date
 - Combined Contracting / Procurement
 - Shared Infrastructure and Services
 - Equipment Standardization
 - Common Work Process / Systems
 - Standard Practices



Applying Lessons Learned in Execution



- **Safety (Gorgon)**
 - Executive alignment / Supervisor skills / Operational discipline
- **Reservoir Development (Gorgon)**
 - Early advanced reservoir characteristics and modeling
 - Batch drilling
- **Initial Site Work Sequence (Gorgon)**
 - Critical early infrastructure (Roads / Beds / Water)
- **Logistics (Gorgon)**
 - Early engagement with contractors
- **Operations pre-planning (Angola LNG)**
 - Translate design into operating procedures
- **Marine Transportation (Angola LNG)**
 - Global coordination of shipments



Off to a Great Start

Future Milestones



- Commence plant site preparation
- Increase accommodation capacity to 3,000 beds
- Complete award of remaining downstream major contracts
- Commence LNG module fabrication
- Complete Train 1 site preparation
- Commence production well drilling
- Commence LNG tank construction



chevron.com



Human Energy™